

MODEL 209C

Clearfloor Direct-driven Two-post Lift

<http://www.peaklift.cn>

The 209C share the same features as

With standard features that include adjustable height, direct drive, powder coat finish, stackable rubber pads and many other appealing features, the 209C accomodates the most demanding lift requirements.



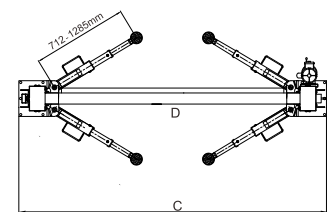
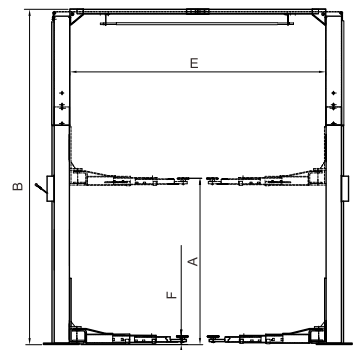
Single-Point Safety Release

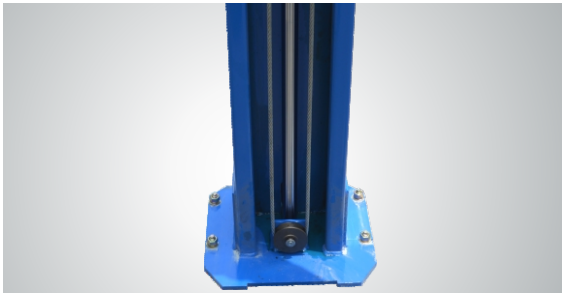
The Single-point safety release makes it easy for the operator to unlock both columns locks from one column, and more reliable !



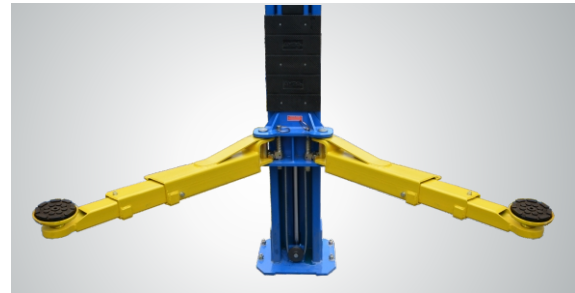
FEATURES

- 9,000Lb.capacity.
- Dual hydraulic direct-driven cylinders made on high standard.
- 4 three-stages arms are suitable for more vehicles.
- 3/8" aircraft quality cable is used for synchronization.
- Single-point safety release, allow technician to disengage both column simultaneously.
- Self-lubricating UHMW Polyethylene sliders and bronze bush.
- Clear-floor design, provide unobstructed floor use.
- Overhead safety shut-off device prevents vehicle damage.
- Stackable rubber pads and 1.5", 2.5", 5" adapters as standard supply.
- Standard adjustable heights accommodates varying ceiling heights.
- Standard door guards.
- Standard toe guards on lifting arms.
- Detachable foot guard and tool tray.





▲ Hydraulic Direct-driven Cylinders
The hydraulic direct-driven cylinders feature more efficient, more longevity, more reliable and less service.



▲ EXCLUSIVE FEATURE !
4 three-stages arms are suitable for more vehicles.



▲ The stackable rubber pads assembly with 1.5", 2.5", 5" extension adapters.



▲ Optional 24V LED lights for clear floor 2-post lifts:
Kits 21102 plus extension cable 201128.



▲ Optional Width Extension Kits
With these kits the width between posts is adjusted from 2850mm to 3000mm.
Kits No.:20906



▲ Exclusive Feature
Optional High Extension Kits
With these kits the overall height is adjusted from 3821mm(150 1/2") to 4431mm(174 1/2").
Kits No.:20902

SPECIFICATIONS

Model	Style	Lifting Capacity	Lifting Time	A	B	C	D	E	F	Gross Weight	Motor
				Lifting Height	Overall Height	Overall Width	Drive-Thru Clearance	Width Between Columns	Minimum Pad Height		
209C	Clearfloor Direct-driven	4.0T (9,000 lbs.)	57 Seconds	1815-2044mm (71 1/2" - 80 1/2")	3621/3821mm (142 1/2"/150 1/2")	3428mm (135")	2528mm (99 1/2")	2850mm (112 1/4")	90mm (3 1/2")	697kg (1,536lbs)	3.0HP