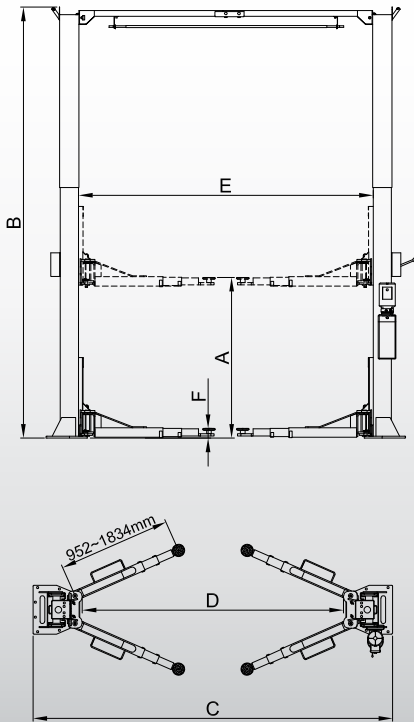


MODEL 212C

Clearfloor Direct-driven Two-post Lift

<http://www.peaklift.cn>



FEATURES

- 12,000 Lb. Capacity.
- Dual hydraulic direct-driven cylinders, designed and made on high standard, high quality seals.
- 4 three-stages arms are suitable for more vehicles.
- 3/8" aircraft quality cable is used for synchronization.
- Self-lubricating UHMW Polyethylene sliders and bronze bush.
- Single-point safety release.
- Clearfloor design, provide unobstructed floor space.
- Overhead safety shut-off device.
- Adjustable two height setting accommodate varying service ceiling heights (The special low setting height 150" need to choose the optional short cables).
- Automatic arms restraints.
- Stackable rubber pads with 1.5", 2.5" and 5" adapters for truck.
- Detachable foot guard and tool tray.

HEAVY-DUTY LINE OF TWO POST LIFTS

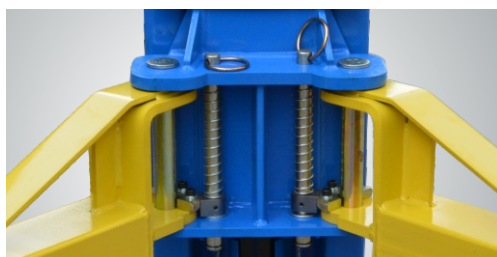
Peak heavy-duty line of two post lifts model 212C are specially designed for vehicle from car to truck, with heavy-duty steel construction



▲ Single-point Safety Release
The release lever (next to the power unit) is pulled down to release the locks on both columns from one column. It is more efficient, more reliable, and safer than the dual safety release



▲ EXCLUSIVE FEATURE !
Super Asymmetric arms allow to load different Vehicles in an asymmetric or symmetric configuration.



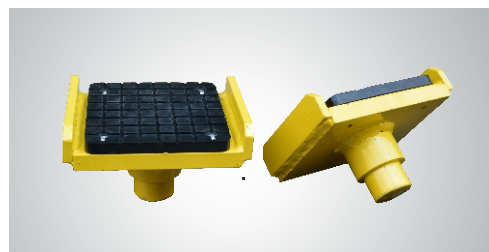
▲ Automatic arm restraints.



▲ The stackable rubber pads assembly with 1.5", 2.5", 5" extension adapters.



▲ Optional 24V LED lights for clear floor 2-post lift
Kits 40101001 plus extension cable 201128.



▲ The Optional Saddle adapter.
Kits No. for heavy-duty truck:21103

SPECIFICATIONS

Model	Style	Lifting Capacity	Lifting Time	A	B	C	D	E	F	Gross Weight	Motor
				Lifting Height	Overall Height	Overall Width	Drive-Thru Clearance	Width Between Columns	Minimum Pad Height		
212C	Clearfloor Direct-driven	5.5 T (12,000 lbs.)	69 Seconds	1842-2071mm (72 1/2" - 81 1/2")	4420/5029mm (174"/ 198")	3829mm (150 3/4")	2787mm (109 3/4")	3137mm (123 1/2")	115mm (4 1/2")	999kg (2,204lbs)	4.0 HP