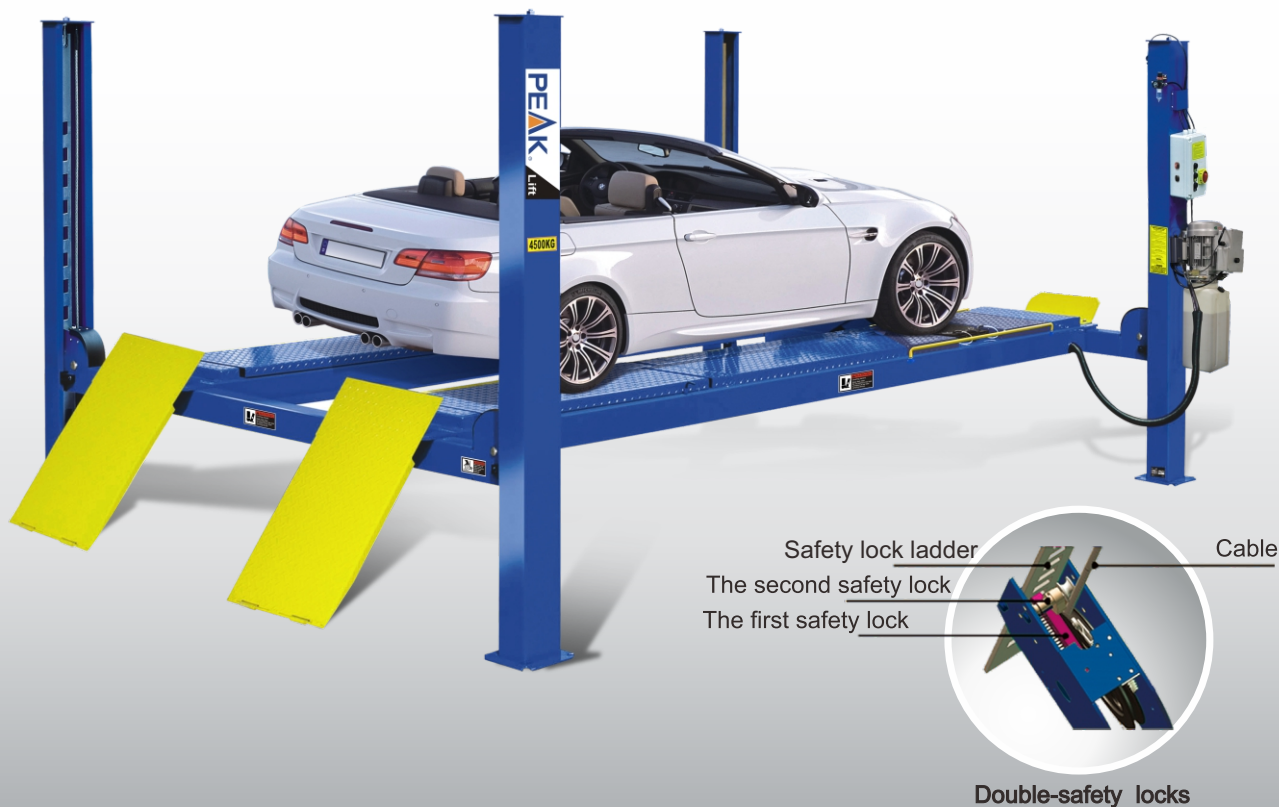


MODEL 409A

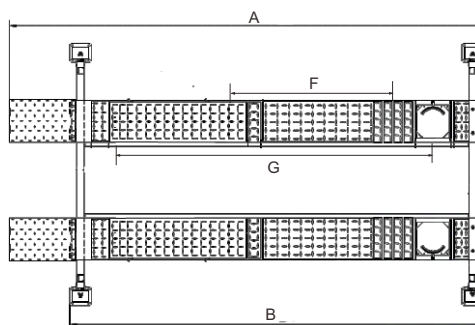
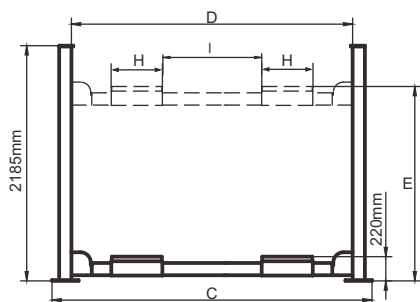
Alignment Four-post Lift

<http://www.peaklift.cn>



FEATURES

- Electric-air control operation system.
- Mechanical self-lock and air-driven safety release.
- Electrical hydraulic power system, cable-driven.
- Non-skid diamond platform.
- Adjustable platform and adjustable safety lock ladders.
- Dual safety device: In case the primary safety locks are out of operation, the lift would also be locked automatically by a second safety device.
- Optional Jack.



MODEL 409A

Alignment Four-post Lift



EXCLUSIVE FEATURE !

Electric control device With **UP**, **LOCK** and **DOWN** buttons

With C.E. stop switch at 300 mm from ground and alarm tone when lowering down from 300 mm to ground make the lift more safety.



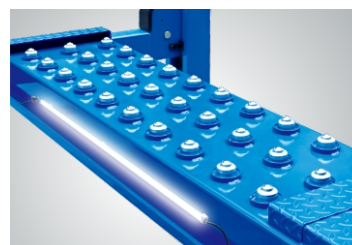
Optional Air Line Kits

All peak four post lifts are designed to use the air line kits for rolling jack.

Kits No.:40102

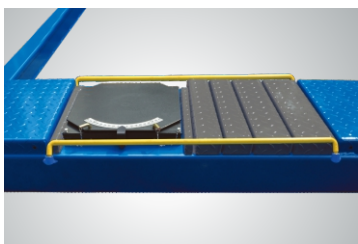


Oil-water separator and Solenoid air valve are installed on the power side column.



The 4-post LED Light kits is fitted for every model of PEAK 4-post lifts .

Kits No.:40102002



Optional Turnplate

Adjustable turnplate blocks to fit various wheel bases vehicles.

Kits No.:40101
Only 409A



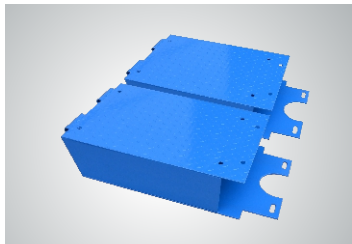
Optional adjustable blocks for alignment 4 post lift.

Kits No.:40905
(used with kits 40903 or 41203)



Optional Rolling Jacks

J6H: manual hydraulic type 2.8 T
J6A: pneumatic hydraulic type 2.8 T
RJ - 8A: pneumatic hydraulic type 3.5 T



Optional platform extension kits add an extra 660mm(26") length to the platform.

Kits No.:40903

SPECIFICATIONS

Model	Lifting Capacity	Lifting Time	A	B	C	D	E	F	G	H	I	Gross Weight	Motor
			Overall Length (Inc. Ramps)	Overall Length (No Ramps)	Overall Width	Width Between Columns	Lifting Height	Min.Four wheel Align	Max.Four wheel Align	Runway width	Width Between Runway		
409A	4.0T (9,000 lbs.)	45 Seconds	5512mm (217")	4600mm (181 1/8")	3208mm (126 1/4")	2852mm (112 1/4")	1915mm (75 3/8")	2000mm (78 3/4")	3460mm (136 1/4")	508mm (20")	Max.1300mm (51 1/4")	1147kg (2,528lbs)	3.0HP