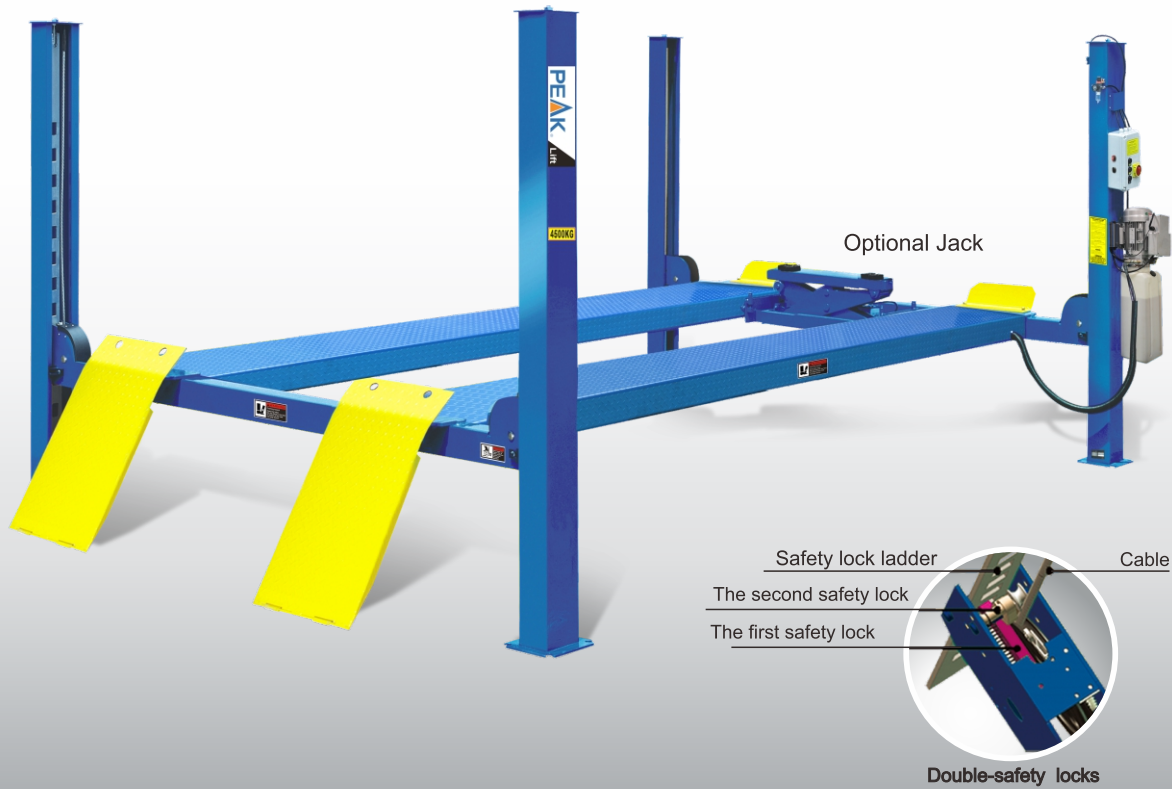


# MODEL 412

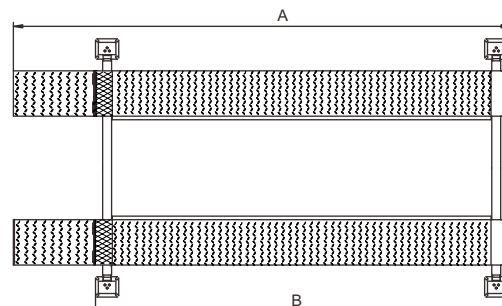
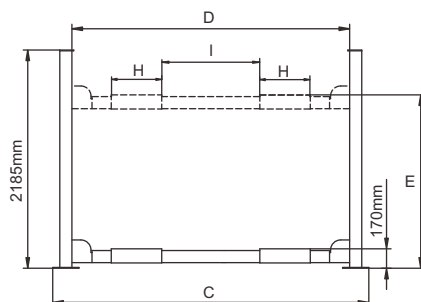
Alignment Four-post Lift

<http://www.peaklift.cn>



## FEATURES

- Electric-air control operation system.
- Mechanical self-lock and air-driven safety release.
- Electrical hydraulic power system, cable-driven.
- Non-skid diamond platform.
- Adjustable platform and adjustable safety lock ladders.
- Dual safety device: In case the primary safety locks are out of operation, the lift would also be locked automatically by a second safety device.
- Optional Jack.



# MODEL 412

Alignment Four-post Lift

PEAK<sup>®</sup> Lift



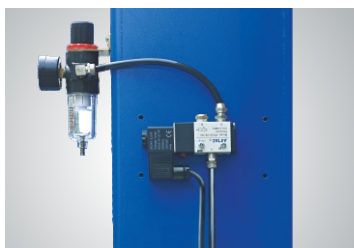
### EXCLUSIVE FEATURE !

Electric control device With **UP**, **LOCK** and **DOWN** buttons  
 With C.E. stop switch at 300 mm from ground and alarm tone when lowering down from 300 mm to ground make the lift more safety.



**Optional Air Line Kits**  
 All peak four post lifts are designed to use the air line kits for rolling jack.

Kits No.:40102



Oil-water separator and Solenoid air valve are installed on the power side column.



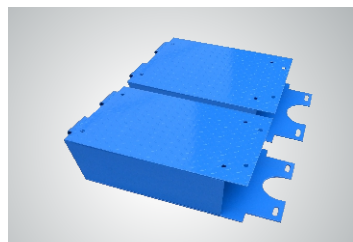
The 4-post LED Light kits is fitted for every model of PEAK 4-post lifts .

Kits No.:40102002



### Optional Rolling Jacks

J6H: manual hydraulic type 2.8 T  
 J6A: pneumatic hydraulic type 2.8 T  
 RJ - 8A: pneumatic hydraulic type 3.5 T



Optional platform extension kits add an extra 660mm(26") length to the platform.

Kits No.:40903

## SPECIFICATIONS

Model	Lifting Capacity	Lifting Time	A	B	C	D	E	F	G	H	I	Gross Weight	Motor
			Overall Length (Inc. Ramps)	Overall Length (No Ramps)	Overall Width	Width Between Columns	Lifting Height	Min.Four wheel Align	Max.Four wheel Align	Runway width	Width Between Runway		
412	5.5T (12,000 lbs.)	63 Seconds	6012mm (236 5/8")	5100mm (200 3/4")	3208mm (126 1/4")	2852mm (112 1/4")	1865mm (73 1/2")	/	/	508mm (20")	Max.1300mm (51 1/4")	1070kg (2,359lbs)	4.0HP